

# Kick-off meeting



Global Health  
& Education

Contributing to the UN strategy,

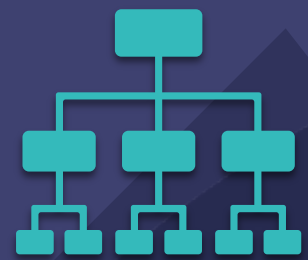
< Building a global UNITWIN network >



## Research

### “Knowledge production”

- Development of an epistemological and ethical frameworks
- Intervention-Research



## Communication

### “Knowledge sharing”

- Visibility of the chair and the research field Communication about our activities and the research data produced by the partners Communication about publications, resources, intervention tools



## Management of the Chair

### “Creation of a community”

- Mapping
- Community management
- Fundraising
- Board of trustees



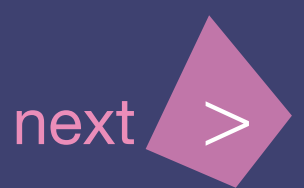
## Education

### “Capacity building”

- Massive Online Open Course (MOOC)
- International training programs



previous



next



# Chair governance

- The community
- A decentralized organization
- All the activities are joint activities (with IUHPE, EUPHA, Eurohealthnet, SHE network, NGOs, companies...)
- A light structure
- A steering committee, a scientific and ethical committee, an organizational team
- A secretariat

Steering  
Committee

Organizational  
team

Global  
Community

Scientific and Ethical  
Committee

Chair secretariat

Activity 1

Activity 2

Activity 3

Activity 4

Activity 5

PREV 3.0

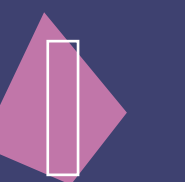
Universities  
Networks  
Start up  
NGOs

Universities  
Networks  
Start up  
NGOs

Universities  
Networks  
Start up  
NGOs

Universities  
Networks  
Start up  
NGOs

Universities  
Networks  
Start up  
NGOs



# The steering committee

(initial composition submitted to UNESCO)

- Mathias Bernard, président de l'université Clermont-Auvergne, Clermont-Ferrand, France
- Membre de la commission nationale française pour l'UNESCO
- Bjarne Brunn Jensen vice-président Europe de l'Union Internationale pour la Promotion et l'Education pour la Santé
- Patricia Mannix Mc Namara, head, department of education, university of Limerick, Limerick, Irlande
- Mamadou Gningue, directeur général de l'Institut de Technologie (ITECOM), Dakar, Sénégal
- Fadi El Hage, titulaire de la chaire du développement durable à l'université Saint Joseph de Beyrouth, Liban
- Papa Sarkho directeur l'Institut Populations Développement et Santé de la Reproduction (IPDSR), Dakar
- Yassine Jelman, président de l'association EDUCA, Tunisie
- Pierre-Antoine Ullmo, PDG de l'entreprise PAU Education, Barcelone, Espagne
- Alain Martel, directeur régional d'Electricité de France région Auvergne, France
- Souhail Latrèche, directeur du service de santé, ville de la Chaux de Fond, Suisse
- Benoît Mathivet, bureau OMS de Tunis, Organisation Mondiale de la Santé
- Christophe Cornu, direction de l'éducation à la santé, UNESCO

# Business model

The activities of the “Global Health and Education” UNESCO chair and UNITWIN network are funded

- ▶ In kind through the core budget of the University.
- ▶ Via additional resources from public (states, regions, municipalities...) and private entities (foundations, companies, NGOs...). The support of private companies comes from multiple competing sources in order to avoid any conflict of interest.
  - Sponsor
  - Partner
  - Member
- ▶ Via a range of services and products offered by the Chair.