

A collage of diverse children's faces, including a young girl on the left, a boy in the center, and a girl on the right, all smiling. A network of yellow lines and dots is overlaid on the image, connecting various points. The text is overlaid on the left side of the collage.

“GLOBAL HEALTH AND EDUCATION”

UNESCO CHAIR and
UNITWIN network

@Connecting knowledge, taking on children's health

AN INITIATIVE THAT MAKES A DIFFERENCE

Universities, UNESCO, WHO, Institutions, International Networks,
Private Entities and Local Communities

**Together to improve Prevention
and Health Education**



“GLOBAL HEALTH AND EDUCATION”

UNESCO CHAIR and
UNITWIN network

@Connecting knowledge, taking on children's health

AN INITIATIVE THAT MAKES A DIFFERENCE

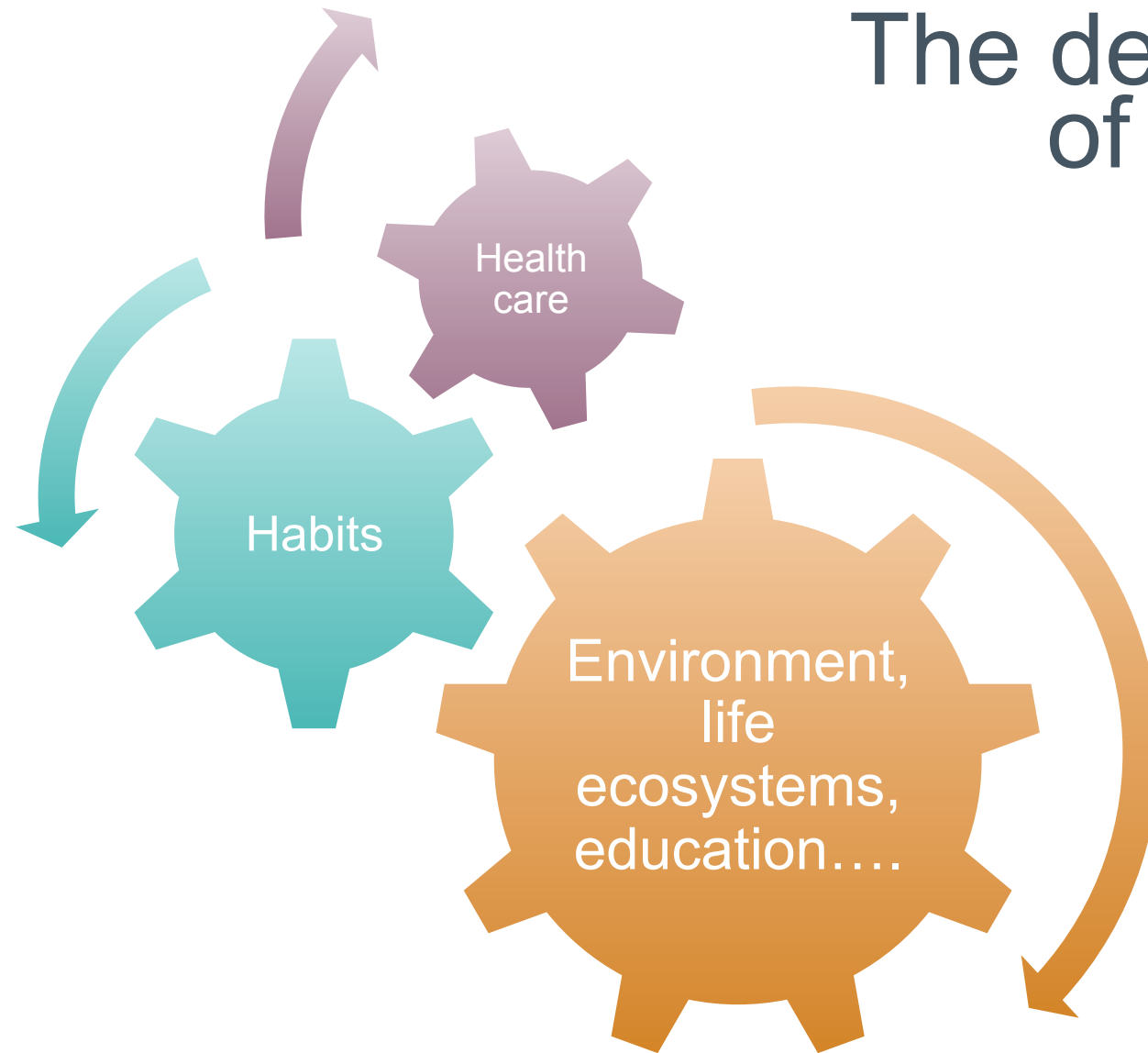
The need for a paradigm shift
Health and Education are changing...

Health and Education are changing

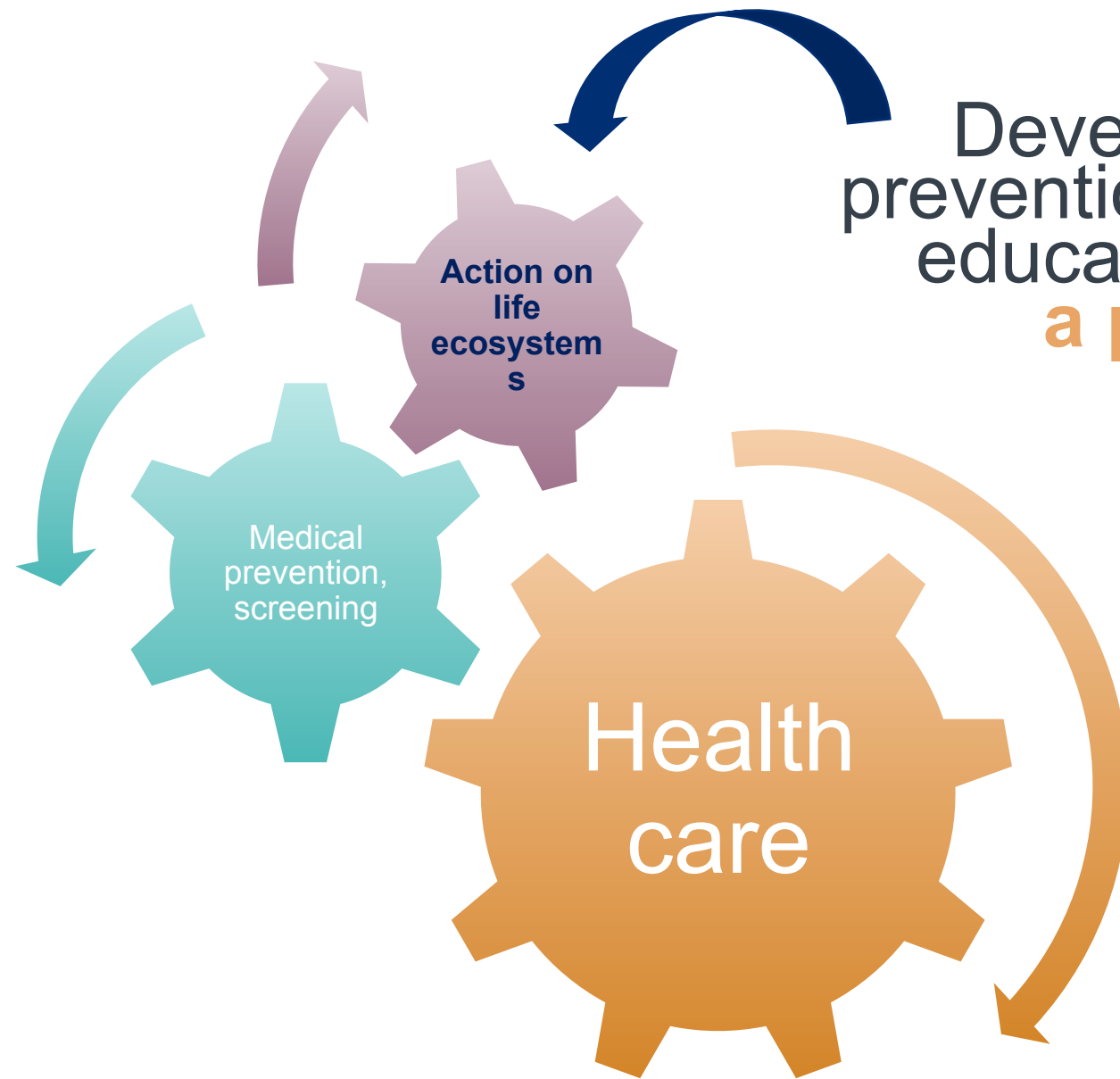
- ✓ The epidemiological transition (70% of deaths worldwide are due to non communicable diseases)
- ✓ The health inequalities (a 36-year gap in life expectancy between countries, gaps in health outcomes within countries linked to social status, income, ethnicity, gender, disability or sexual orientation....)
- ✓ Most of the health determinants are common to all the non-communicable diseases especially those in relation to education (the contribution of the determinants not linked to the health care system is 85%!)

Connecting knowledge, taking on children's health

The determinants of health



Connecting knowledge, taking on children's health



Developing the
prevention and health
education sector:
a priority

Connecting knowledge, taking on children's health



“GLOBAL HEALTH AND EDUCATION”

UNESCO CHAIR and
UNITWIN network

@Connecting knowledge, taking on children's health

AN INITIATIVE THAT MAKES A DIFFERENCE

The need for a paradigm shift

What do we know from research data?

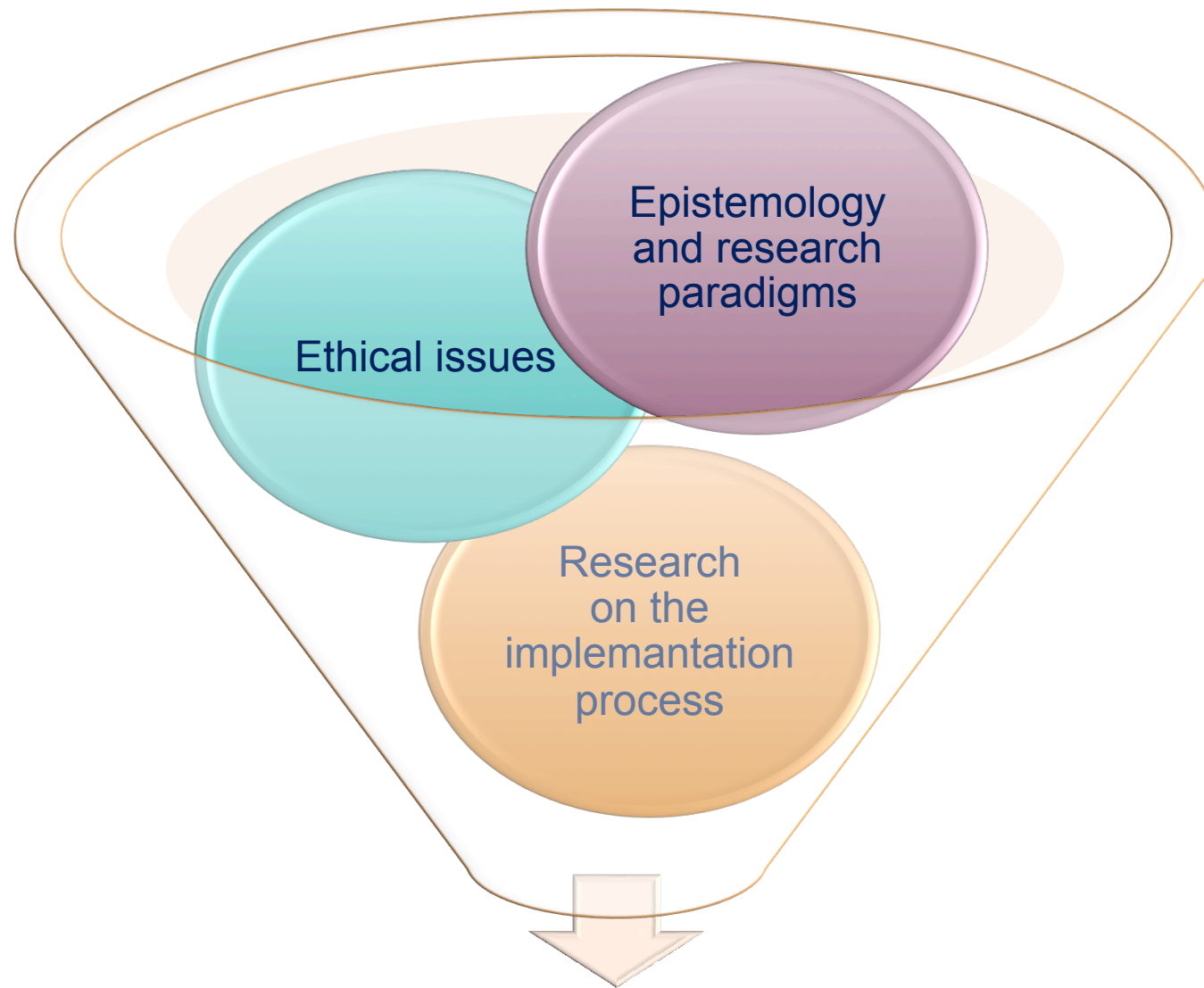
What do we know from research data?

Research shows single shot interventions, information alone, stigmatisation or moralisation has no positive impact.

What makes a difference is combining:

- ✓ action on **the living conditions** that influence health, the ecosystems of life of the populations: the physical and social environment, the access to appropriate services (health, social, educational).
- ✓ **education** of people. The idea is to give everybody the means to take care of their own health in a autonomous and responsible way.

Connecting knowledge, taking on children's health



Three key challenges for research

Connecting knowledge, taking on children's health



“GLOBAL HEALTH AND EDUCATION”

UNESCO CHAIR and
UNITWIN network

@Connecting knowledge, taking on children's health

AN INITIATIVE THAT MAKES A DIFFERENCE

The need for a paradigm shift
Strengthening the data base



Children's life ecosystem



- ✓ Family
- ✓ Community
- ✓ Schools
- ✓ Health, social and educational sectors

➔ Contributing to shape the world of tomorrow

Connecting knowledge, taking on children's health

Renewing the approaches: our vision 1



Local-digital Sustainable interventions

Connecting knowledge, taking on children's health

Renewing the approaches: our vision 2

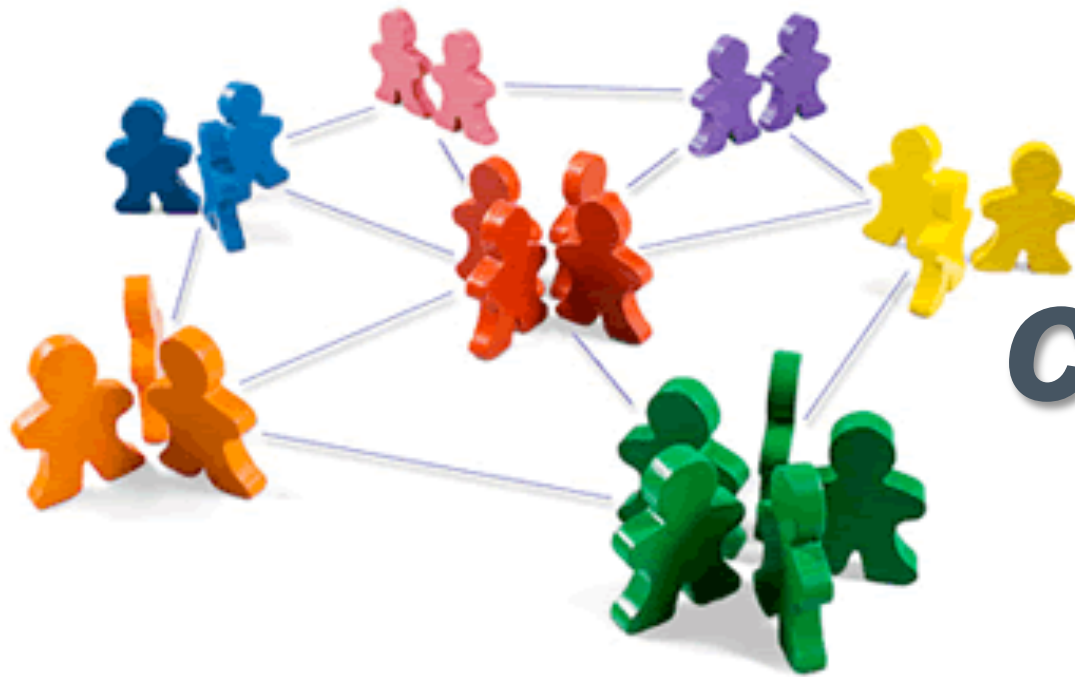


Connecting knowledge

*Research
Innovation
Policies
Practices*

Connecting knowledge, taking on children's health

Renewing the approaches: our vision 3



Learning communities

*Intervention-research
Innovation*

Connecting knowledge, taking on children's health



“GLOBAL HEALTH AND EDUCATION”

UNESCO CHAIR and
UNITWIN network

@Connecting knowledge, taking on children's health

AN INITIATIVE THAT MAKES A DIFFERENCE

The need for a paradigm shift

The UNESCO chair: a knowledge hub

The “Global Health and Education” UNESCO chair and UNITWIN network

The UNESCO UNITWIN programme serves as a prime means of building the capacities of higher education and research institutions through the exchange of knowledge and sharing.



Connecting knowledge, taking on children's health



“GLOBAL HEALTH AND EDUCATION”

UNESCO CHAIR and
UNITWIN network

@Connecting knowledge, taking on children's health

AN INITIATIVE THAT MAKES A DIFFERENCE

The need for a paradigm shift
A global collaborative project

The objectives

- ✓ **The aim is to strengthen the relationship between universities, policy makers, practitioners and civil society.**
 - Via Universities' core business: contribution to knowledge base (research) knowledge dissemination and capacity building (MOOCs, training programmes, fact sheets...)
 - Via a strong connexion with UN agencies and existing networks
- ✓ **And make a contribution to policy and practice development by:**
 - acting as an umbrella to developing international research projects building on local research (NCDs and implementation)
 - strengthening capacity building through academic programmes and research, contribution to literature for field practitioners, what works in what contexts interrogating evidence and present evidence in a way people in the field understand
 - translating the research evidence into practice and policy

Connecting knowledge, taking on children's health

Added value

- ✓ A unique **Network of Universities** involved in research and training in prevention and health education (public health, political sciences, education...)
- ✓ The United Nations label: **UNESCO, WHO**
- ✓ A project involving the key stakeholders at global and national levels especially **international networks** (IUHPE, SHE network, ESN...)

Added value

- ✓ A **strategic resource** for knowledge production, knowledge transfer, capacity building and political counselling at the global level.
- ✓ Its specific contribution will be as a “driving force” for the networks, offering “think tank”, “**knowledge-hub**” and “bridge building” capacities spanning academia, international networks, institutions, professional communities, unions, and local communities, thus operating at macro and micro levels of policy and practice.

Added value for the partners



- ✓ Recognition
- ✓ Visibility
- ✓ Advocacy

- ✓ Up-scaling research
- ✓ Intersectorality
- ✓ Dissemination



- ✓ Collaboration
- ✓ Inspiration
- ✓ Support
- ✓ Funding schemes

Connecting knowledge, taking on children's health



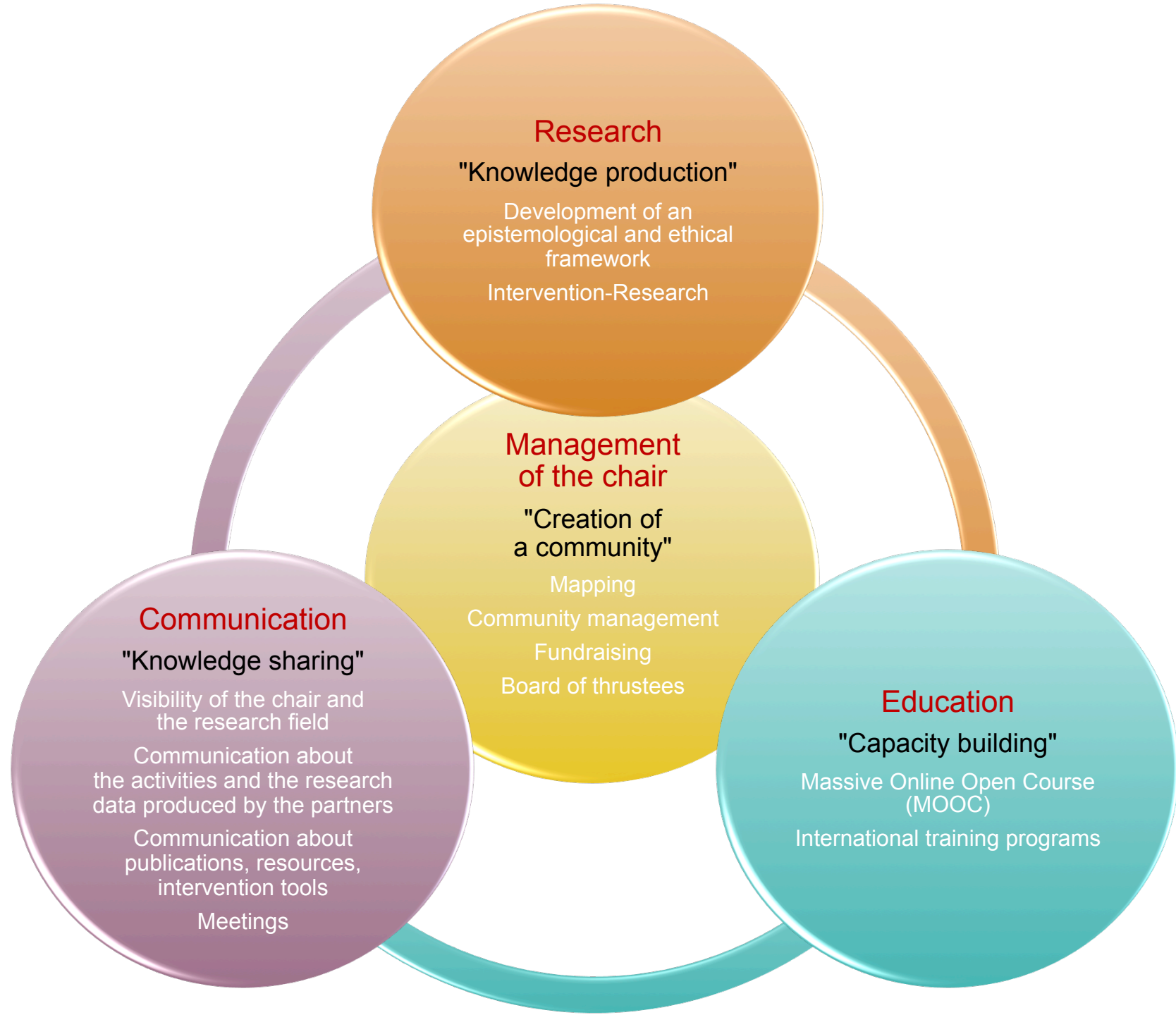
“GLOBAL HEALTH AND EDUCATION”

UNESCO CHAIR and
UNITWIN network

@Connecting knowledge, taking on children's health

AN INITIATIVE THAT MAKES A DIFFERENCE

The need for a paradigm shift
A global collaborative project



A collage of diverse children's faces, including a young girl on the left, a boy in the center, and a girl on the right. Overlaid on the collage is a network diagram with yellow nodes and lines. The text "GLOBAL HEALTH AND EDUCATION" is written in white, bold, uppercase letters across the middle of the collage.

“GLOBAL HEALTH AND EDUCATION”

UNESCO CHAIR and
UNITWIN network

@Connecting knowledge, taking on children's health

AN INITIATIVE THAT MAKES A DIFFERENCE

The need for a paradigm shift

The business model

Business model

The activities of the “Global Health and Education” UNESCO chair and UNITWIN network are funded

- ✓ In kind through the core budget of the University.
- ✓ Via resources mobilized through the new “Foundation for Research on Education and Health” (FoREH). The support of private companies comes from multiple competing sources in order to avoid any conflict of interest.
- ✓ Via a range of services and products offered by the chair.



“GLOBAL HEALTH AND EDUCATION”

UNESCO CHAIR and
UNITWIN network

@Connecting knowledge, taking on children's health

AN INITIATIVE THAT MAKES A DIFFERENCE

The need for a paradigm shift

A working plan

A work plan for the UNESCO chair

- ✓ Creating a **supportive community** as the key challenge
- ✓ **Communication** as the core business of the UNESCO chair (3 objectives: branding, creation and management of the community, funding and 3 targets: public, academics, funders)
- ✓ Five **deliverables**

Connecting knowledge, taking on children's health

The five deliverables

1. A **framework for research** in the field (epistemology and ethics)
2. An **international research project** based on an “**intervention-research toolkit**”
3. A **multilingual free online open course** (MOOC) for education, social and health professionals linking existing academic programmes of the universities as well as their respective continuous professional development programmes
4. The publication of series of **multilingual fact sheets** on the scientific data available
5. A **map** of the research centres, students and academics ; **support** for the development of research teams in low income regions

Connecting knowledge, taking on children's health



“GLOBAL HEALTH AND EDUCATION”

UNESCO CHAIR and
UNITWIN network

@Connecting knowledge, taking on children's health

AN INITIATIVE THAT MAKES A DIFFERENCE

The need for a paradigm shift

Taking part to the UNESCO chair and UNITWIN network

To be a partner of the “Global Health and Education” UNESCO chair and UNITWIN network

- ✓ A letter indicating their commitment in the project and designing a coordinator.
- ✓ The involvement could be from a minimal level (being part of the community and exchanging information within the network) to participation in the seminars, research project, fact sheets, MOOC production and governance of the chair and network.



“GLOBAL HEALTH AND EDUCATION”

UNESCO CHAIR and
UNITWIN network

@Connecting knowledge, taking on children's health

AN INITIATIVE THAT MAKES A DIFFERENCE

Universities, UNESCO, WHO, Institutions, International Networks,
Private Entities and Local Communities

**Together to improve Prevention
and Health Education**